

OXMOOR CORPORATE PARK

100 Milan Parkway · Birmingham, Alabama 35211

Amenities:

- Excellent access to the interstate system
- Centralized location within the MSA
- Class A office development including extensive landscaping and walking trails
- All utilities at site

Available Sites:

- Acreage: 1-9 acre lots
- Zoning: MXD
- Location: City of Birmingham

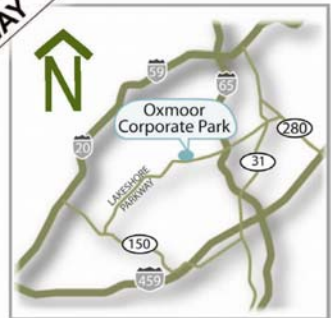
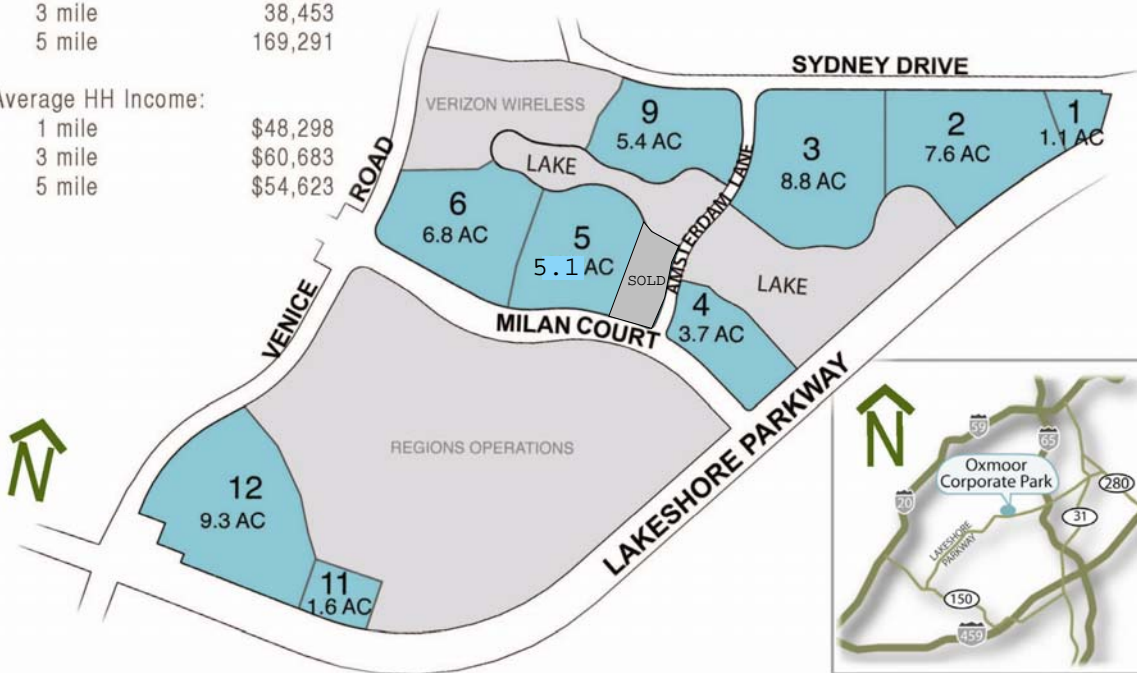
Demographics:

Daytime Population:

1 mile	3,098
3 mile	38,453
5 mile	169,291

Average HH Income:

1 mile	\$48,298
3 mile	\$60,683
5 mile	\$54,623



DANIEL
CORPORATION

CHRIS SCHMIDT

205.443.4561

cschmidt@danielcorp.com